

Gateshead Insights Network

The following information sets out how we will work together as the Insights Network in Gateshead.

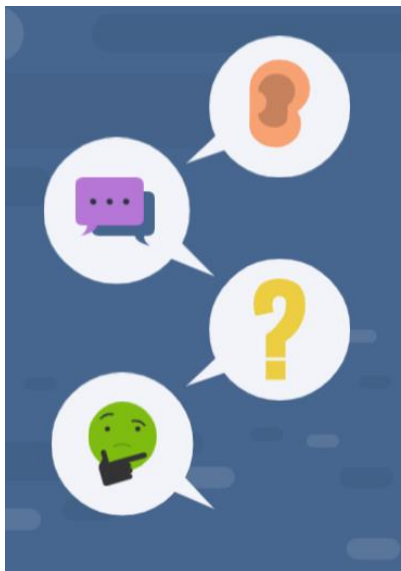
	<p>Purpose</p> <p>To share ideas, knowledge, experience, and information between people with a learning disability, autistic people and their families AND Gateshead Council and Health partners, responsible for the Learning Disability and Autism Plan.</p>
	<p>Why</p> <p>To have conversations (engagement) that can lead to change, improvements and developments in services linked to the Learning Disability and Autism Plan in Gateshead.</p>
 	<p>Membership</p> <p>Open to organisations and groups that either work with people with a learning disability, autistic people, or their families across Gateshead.</p> <p>Membership may change over time. Typically, there will be between 6 – 12 organisations or groups leading the work and connections into the wider community.</p> <p>Aim is for the organisations or groups involved to represent:</p> <ul style="list-style-type: none">• Autistic children and young people• Autistic adults• Children and young people with a learning disability• Adults with a learning disability• Families



Organisations or groups can be represented by a maximum of 2 people at any one time. 1 person needs to be able to direct the conversations (engagement) across their whole organisation or group and where possible, into the wider community.

There will be representation from Health and Social Care Partners to support the flow of communication.

Inclusion North will support the running of the network (communication, membership, payments etc.)



Responsibilities

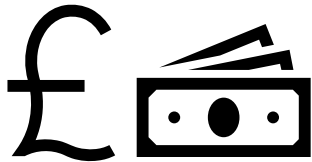
Members:

- Support the purpose of the network
- Involved in designing resources to support the conversations needed. For example, the types of questions and information to be used, how and where these conversations take place
- Share information and support conversations to take place within their organisations or groups and the wider community
- Help make sure the broadest range of experience and views from across Gateshead is gathered. For example, from different localities, age groups, varying levels of need, different background etc.
- Share the information gathered with the Insights Network & Gateshead Council.



- Stay in touch with the Insights Network and attend meetings where possible.
- Say if there is a 'conflict of interest' with a particular conversation topic.

This is when the interests of the organisation or group are directly affected by the topic. In this situation the member would not 'lead' on the engagement related to this, simply support the activities.



Practical arrangements

Organisations/Groups can claim costs for:

- Experts by Experience (involvement fees) if representing the organisation or group
- Developing resources
- Engagement activities over and above that which they would usually undertake
- Representing the network at other meetings

Costs to be agreed in advance

Notes:

There is commitment from Gateshead Council and their Health partners to ask and listen to the Insights Network.

Terms of Reference will be reviewed again March 2022