

What next for NHS providers and people with learning disabilities

Rob Webster, Chief Executive of NHS Confederation





The 2015 Challenge Manifesto

a time for action



NHS



Easy Read

Five Year Forward View

October 2014



Some of what is needed can be brought about by the NHS itself.

Other actions need new partnerships with local communities, local authorities and employers.



Second, the NHS will take steps to break down the barriers in how care is provided between family doctors and hospitals,

between physical and mental health,



To support these changes, the national leadership of the NHS will need to act clearly together, and make sure that the rules and ways of working are able to be flexible to local needs. We will support local leadership with new ideas.



‘People with a learning disabilities have the right to the same opportunities as anyone else to live satisfying and valued lives.

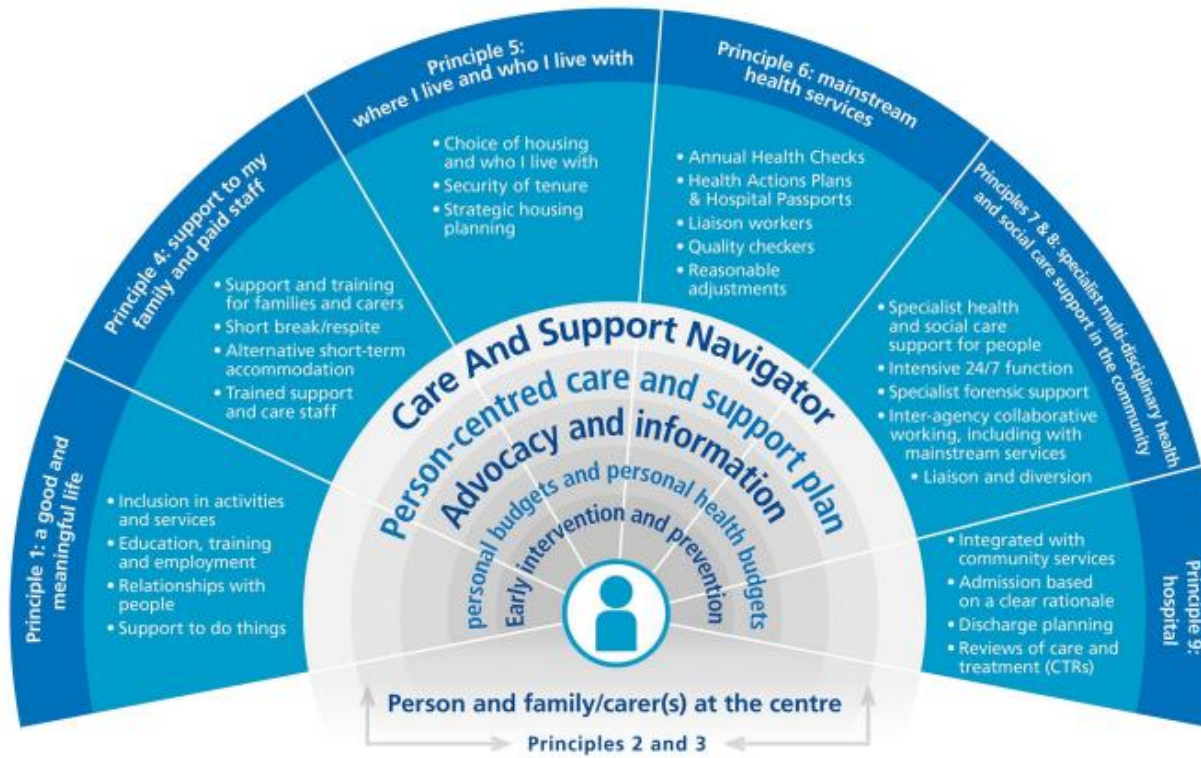
...they should expect to get the support they need to be healthy, safe and an active part of society.’

Building the right support

A national plan to develop community services and close inpatient facilities for people with a learning disability and/or autism who display behaviour that challenges, including those with a mental health condition



October 2015



Service Model

Commissioners understand their local population now and in the future



Supporting local areas

- 4.11 NHS England, LGA and ADASS will support transforming care partnerships through the different stages of their journey in planning for and implementing change.



Involvement of people with lived experience and their families and carers in every part of the plan

Case study – Retail Charity Bonds

In 2014, the first charity bond to be listed on the London Stock Exchange's Order Book for Retail Bonds was launched.

The bond, which raised £11 million to fund accommodation for people with a learning disability, was so oversubscribed it closed its offer period two and half weeks early.

The bond was launched by Retail Charity Bond plc and the funds have been used by Golden Lane Housing, the national charity which provides housing for people with a learning disability, to invest in buying and adapting much-needed community based housing across the country for over 100 people with a learning disability.

The NHS is made of People



#diverseNHS

www.nhsemployers.org/learningdisabilities



@NHSConfed_RobW